

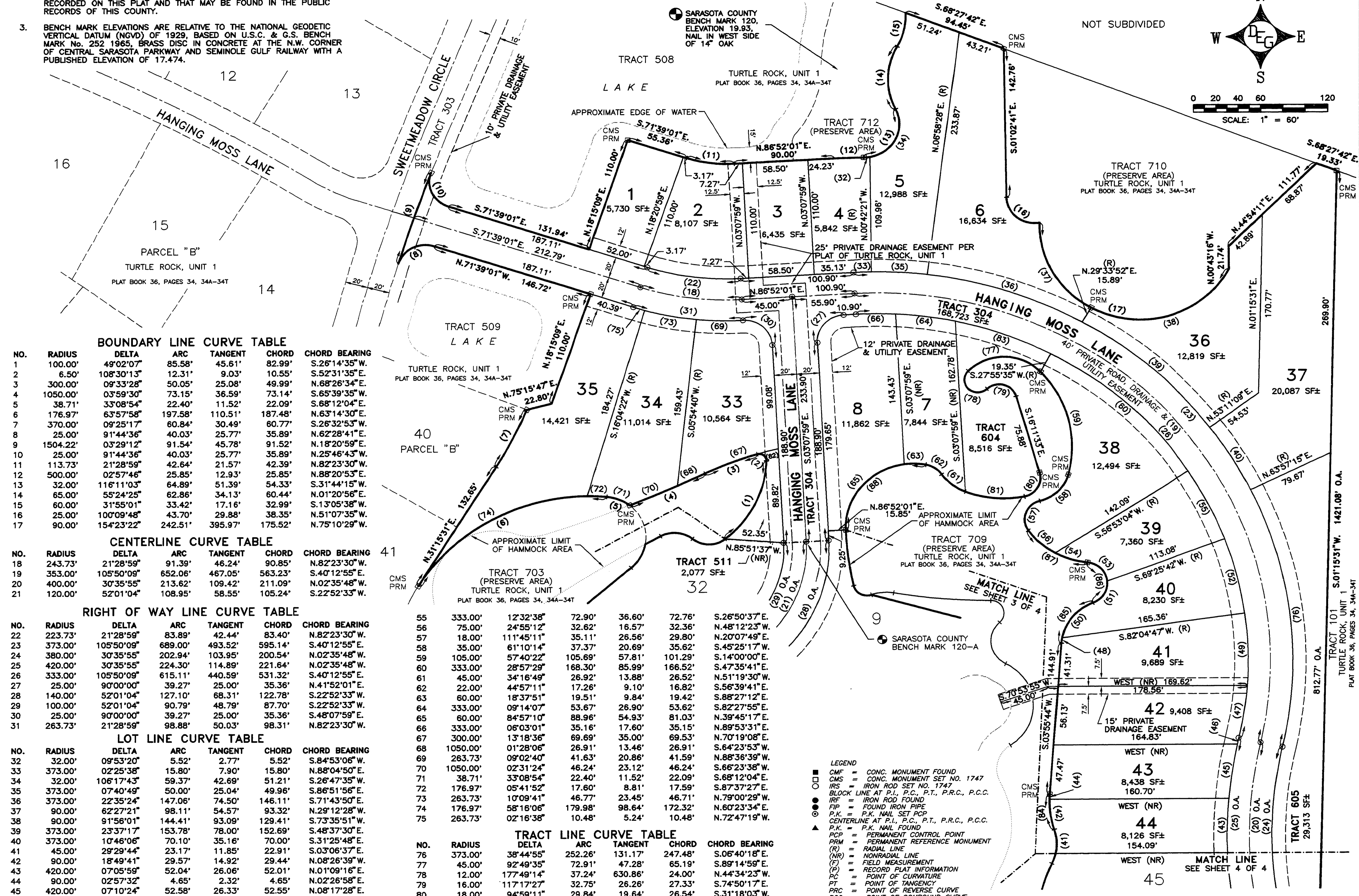
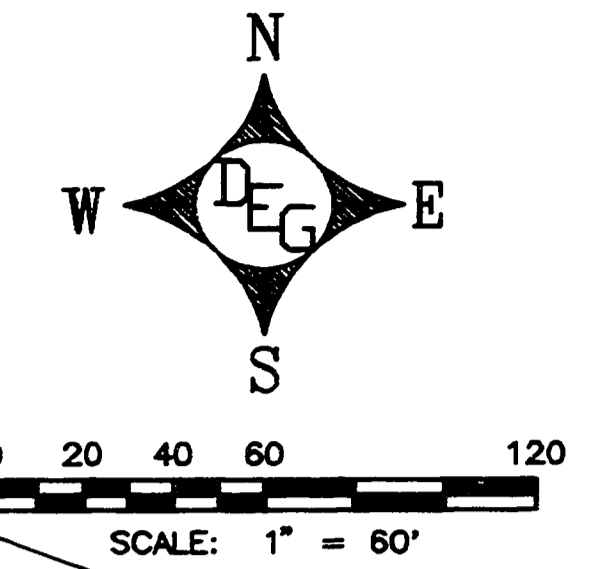
SAVANNAH AT TURTLE ROCK

A SUBDIVISION OF PARCEL "C", TURTLE ROCK, UNIT 1, PLAT BOOK 36, PAGES 34, 34A-34T
IN SECTION 25, TOWNSHIP 37 SOUTH, RANGE 18 EAST, SARASOTA COUNTY, FLORIDA

PLAT BOOK 37 PAGE 25A
SHEET 2 OF 4 SHEETS

NOTES:

- BEARINGS SHOWN HEREON REFER TO AN ASSUMED BEARING FOR THE EASTERLY LINE OF THE S.E. 1/4 OF SECTION 23, TOWNSHIP 37 SOUTH, RANGE 18 EAST BEING S.00°24'02"E.
- NOTICE: THERE MAY BE ADDITIONAL RESTRICTIONS THAT ARE NOT RECORDED ON THIS PLAT AND THAT MAY BE FOUND IN THE PUBLIC RECORDS OF THIS COUNTY.
- BENCH MARK ELEVATIONS ARE RELATIVE TO THE NATIONAL GEODETIC VERTICAL DATUM (NGVD) OF 1929, BASED ON U.S.C. & G.S. BENCH MARK No. 252 1965, BRASS DISC IN CONCRETE AT THE N.W. CORNER OF CENTRAL SARASOTA PARKWAY AND SEMINOLE GULF RAILWAY WITH A PUBLISHED ELEVATION OF 17.474.



BOUNDARY LINE CURVE TABLE

NO.	RADIUS	DELTA	ARC	TANGENT	CHORD	CHORD BEARING
1	100.00'	49°02'07"	85.58'	45.61'	82.99'	S.26°14'35"W.
2	6.50'	108°30'13"	12.31'	9.03'	10.55'	S.52°31'35"E.
3	300.00'	09°33'28"	50.05'	25.08'	49.99'	N.68°26'34"E.
4	1050.00'	03°59'30"	73.15'	36.59'	73.14'	S.65°39'35"W.
5	38.71'	33°08'54"	22.40'	11.52'	22.09'	S.68°12'04"E.
6	176.97'	63°57'58"	197.58'	110.51'	187.48'	N.63°14'30"E.
7	370.00'	09°25'17"	60.84'	30.49'	60.77'	S.28°32'53"W.
8	25.00'	91°44'36"	40.03'	25.77'	35.89'	N.62°28'41"E.
9	1504.22'	03°29'12"	91.54'	45.78'	91.52'	N.18°20'59"E.
10	25.00'	91°44'36"	40.03'	25.77'	35.89'	N.25°46'43"W.
11	113.73'	21°28'59"	42.64'	21.57'	42.39'	N.82°23'30"W.
12	500.00'	02°57'46"	25.85'	12.93'	25.85'	N.88°20'53"E.
13	32.00'	116°11'03"	64.89'	51.39'	54.33'	S.31°44'15"W.
14	65.00'	55°24'25"	62.86'	34.13'	60.44'	N.01°20'56"E.
15	60.00'	31°55'01"	33.42'	17.16'	32.99'	S.13°05'38"W.
16	25.00'	100°09'48"	43.70'	29.88'	38.35'	N.51°07'35"W.
17	90.00'	154°23'22"	242.51'	395.97'	175.52'	N.75°10'29"W.

CENTERLINE CURVE TABLE

NO.	RADIUS	DELTA	ARC	TANGENT	CHORD	CHORD BEARING
18	243.73'	21°28'59"	91.39'	46.24'	90.85'	N.82°23'30"W.
19	353.00'	105°50'09"	652.06'	467.05'	563.23'	S.40°12'55"E.
20	400.00'	30°35'55"	213.62'	109.42'	211.09'	N.02°35'48"W.
21	120.00'	52°01'04"	108.95'	58.55'	105.24'	S.22°52'33"W.

RIGHT OF WAY LINE CURVE TABLE

NO.	RADIUS	DELTA	ARC	TANGENT	CHORD	CHORD BEARING
22	223.73'	21°28'59"	83.89'	42.44'	83.40'	N.82°23'30"W.
23	373.00'	105°50'09"	689.00'	493.52'	595.14'	S.40°12'55"E.
24	380.00'	30°35'55"	202.94'	103.95'	200.54'	N.02°35'48"W.
25	420.00'	30°35'55"	224.30'	114.89'	221.64'	N.02°35'48"W.
26	333.00'	105°50'09"	615.11'	440.59'	531.32'	S.40°12'55"E.
27	25.00'	90°00'00"	39.27'	25.00'	35.36'	N.4°15'01"E.
28	140.00'	52°01'04"	127.10'	68.31'	122.78'	S.22°52'33"W.
29	100.00'	52°01'04"	90.79'	48.79'	87.70'	S.22°52'33"W.
30	25.00'	90°00'00"	39.27'	25.00'	35.36'	S.48°07'59"E.
31	263.73'	21°28'59"	98.88'	50.03'	98.31'	N.82°23'30"W.

LOT LINE CURVE TABLE

NO.	RADIUS	DELTA	ARC	TANGENT	CHORD	CHORD BEARING
32	32.00'	09°53'20"	5.52'	2.77'	5.52'	S.84°53'06"W.
33	373.00'	02°25'38"	15.80'	7.90'	15.80'	N.88°04'50"E.
34	32.00'	106°17'43"	59.37'	42.69'	51.21'	S.26°47'35"W.
35	373.00'	07°40'49"	50.00'	25.04'	49.96'	S.86°51'56"E.
36	373.00'	22°35'24"	147.06'	74.50'	146.11'	S.71°43'50"E.
37	90.00'	62°27'21"	98.11'	54.57'	93.32'	N.29°12'28"W.
38	90.00'	91°56'01"	144.41'	93.09'	129.41'	S.73°35'51"W.
39	373.00'	23°37'17"	153.78'	78.00'	152.69'	S.48°37'30"E.
40	373.00'	10°46'06"	70.10'	35.16'	70.00'	S.31°25'48"E.
41	45.00'	29°29'44"	23.17'	11.85'	22.91'	S.03°06'37"E.
42	90.00'	18°49'41"	29.57'	14.92'	29.44'	N.08°28'39"W.
43	420.00'	07°05'59"	52.04'	26.06'	52.01'	N.01°09'16"E.
44	90.00'	02°57'32"	4.65'	2.32'	4.65'	N.02°28'58"E.
45	420.00'	07°10'24"	52.58'	26.33'	52.55'	N.08°17'28"E.
46	420.00'	00°49'30"	6.05'	3.02'	6.05'	N.12°17'25"E.
47	333.00'	08°43'10"	50.68'	25.39'	50.63'	S.08°20'35"W.
48	45.00'	06°26'31"	5.06'	2.53'	5.06'	N.07°09'00"E.
49	333.00'	11°54'13"	69.18'	34.72'	69.06'	S.01°58'06"E.
50	45.00'	57°39'54"	45.29'	24.77'	43.40'	N.39°12'12"E.
51	20.00'	73°45'21"	25.75'	15.00'	24.00'	S.31°09'29"W.
52	333.00'	12°39'06"	73.53'	36.92'	73.38'	S.14°14'46"E.
53	20.00'	77°50'38"	27.17'	16.15'	25.13'	S.44°38'31"E.
54	75.00'	22°53'51"	29.97'	15.19'	29.77'	N.72°06'54"W.

TRACT LINE CURVE TABLE

NO.	RADIUS	DELTA	ARC	TANGENT	CHORD	CHORD BEARING
55	333.00'	12°32'38"	72.90'	36.60'	72.76'	S.26°50'37"E.
56	75.00'	24°55'12"	32.62'	16.57'	32.36'	N.48°12'23"W.
57	18.00'	111°45'11"	35.11'	26.56'	29.80'	N.20°07'49"E.
58	35.00'	61°10'14"	37.37'	20.69'	35.62'	S.45°25'17"W.
59	105.00'	57°40'22"	105.69'	57.81'	101.29'	S.14°00'00"E.
60	333.00'	28°57'29"	168.30'	85.99'	166.52'	S.47°35'41"E.
61	45.00'	34°16'49"	26.92'	13.88'	26.52'	N.51°19'30"W.
62	22.00'	44°57'11"	17.26'	9.10'	16.82'	S.56°39'41"E.
63	60.00'	18°37'51"	19.51'	9.84'	19.42'	S.88°27'12"E.
64	333.00'	09°14'07"	53.67'	26.90'	53.62'	S.82°27'55"E.
65	60.00'	84°57'10"	88.96'	54.93'	81.03'	N.39°45'17"E.
66	333.00'	06°03'01"	35.16'	17.60'	35.15'	N.89°53'31"E.
67	300.00'	13°18'36"	69.69'	35.00'	69.53'	N.70°19'08"E.
68	1050.00'	01°28'06"	26.91'	13.46'	26.91'	S.64°23'53"W.
69	263.73'	24°55'12"	41.63'	20.86'	41.59'	N.88°36'39"W.
70	1050.00'	02°31'24"	46.24'	23.12'	46.24'	S.66°23'38"W.
71	38.71'	33°08'54"	22.40'	11.52'	22.09'	S.68°12'04"E.
72	176.97'	05°41'52"	17.60'	8.81'	17.59'	S.87°37'27"E.
73	263.73'	10°09'41"	46.77'	23.45'	46.71'	N.79°00'29"W.
74	176.97'	58°16'06"	179.98'	98.64'	172.32'	N.60°23'34"E.
75	263.73'	02°16'38"	10.48'	5.24'	10.48'	N.72°47'19"W.

- LEGEND**
- CMF = CONC. MONUMENT FOUND
 - CMS = CONC. MONUMENT SET NO. 1747
 - IRS = IRON ROD SET NO. 1747
 - BL = BLOCK LINE AT P.I., P.C., P.T., P.R.C., P.C.C.
 - IRF = IRON ROD FOUND
 - FIP = FOUND IRON PIPE
 - P.K. = P.K. NAIL SET POP
 - CENTERLINE AT P.I., P.C., P.T., P.R.C., P.C.C.
 - ▲ = PERMANENT CONTROL POINT
 - PRM = PERMANENT REFERENCE MONUMENT
 - RL = RADIAL LINE
 - (NR) = NONRADIAL LINE
 - (F) = FIELD MEASUREMENT
 - (P) = RECORD PLAT INFORMATION
 - PC = POINT OF CURVATURE
 - PT = POINT OF TANGENCY
 - PRC = POINT OF REVERSE CURVE
 - PCC = POINT OF COMPOUND CURVE
 - PI = POINT OF INTERSECTION
 - SF = SQUARE FEET
 - O.A. = OVER ALL

DARRELL E. GERKEN
PROFESSIONAL LAND SURVEYOR
5730-A JASON LEE PLACE SARASOTA, FLORIDA 34233
(813) 924-7465 922-3846 (FAX)